

# Celebrity HAIRSTYLES

OUR BIG 30th anniversary issue!

#80  
AUG  
2010

# 583

## PRETTY NEW LOOKS & How To Do Them

### PRODUCTS THAT SOLVE PROBLEMS

Savvy Ways to Enhance Shine and Texture



Best Tools



Finishing Touches the Pros Swear By!

# 10 GREAT CUTS IN 10 MINUTES

## LAYERS FOR EVERY LENGTH

AMANDA'S LOOK  
Make It Yours!  
See page 6



CARRIE



MILLA



ANNALYNNE



JESSICA



DREW



HAYDEN

Summer Trend Report  
Frizz-Free Curls  
Highlights★Bangs  
Twists★Waves  
Updos



\$5.99

417199

8 0 >

71486 02623 5  
Display until July 5, 2010





shade  
secrets

white hot

IS A DAZZLING NEW  
SHADE IN YOUR FUTURE?  
CHECK OUT THESE  
EXCITING OPTIONS!

A great style doesn't cut it if your color is flat and unflattering. So, to help you choose a gorgeous new hue, we gathered some of the latest options and got tips on how to make them your own from Nicholas Penna, Jr., owner of SalonCapri in Newton, MA.

## WHITE HOT

Classic platinum is an ultra-edgy look when paired with a polished, super-smooth bob.

*The Technique:* Ask your stylist for a double process color treatment with a high lift toner. The latter will achieve that clear, almost white color.

*Penna Says:* "When going this light, chemicals can easily damage your hair."

Hair by COLIN MCANDREW & KYM WYSER, MEDUSA  
HAIRDRESSING, EDINBURGH. MAKEUP BY IRENA ROGERS.  
PHOTO BY ALESSANDRO CECCHINI



hollywood heat



## CHOCOLATE CHARMER

If you have a taste for chocolate, try this sultry, dark brown shade.

**The Technique:** To get the look, opt for a single process brown from roots to tips.

**Penna Says:** "This shade looks great on women with naturally lighter hair, but keep in mind that going from light to dark is a commitment—it's hard to go back."

HAIR BY KARINE JACKSON, PHOTO BY ANDREW O'DOOLE, MAKEUP BY MARGARET ASTON, CLOTHING STYLIST: LETICIA DARE



chocolate charmer

## SO SULTRY

A dark brown base that's threaded with red is very wearable.

**The Technique:** Ask your colorist for a single process brunette shade, followed by baliaage for the highlights.

**Penna Says:** "This is a great look for anyone who wants a little change or dimension without a huge commitment."

HAIR BY KRISTY WARD, DOUGLAS CARROLL SALON, RALEIGH, NC. MAKEUP BY BETTY MEKONNEN, PHOTO BY TOM CARSON, PRODUCTION: GLOBAL HAIR & FASHION GROUP



edgy does it

## EDGY DOES IT

A shattered cut meets its match: White-blonde with red highlights.

**The Technique:** Apply a light blonde shade, then use the baliaage technique to add highlights.

**Penna Says:** "It's a funky, daring look, but be forewarned: You'll need frequent touchups, which can be time-consuming and costly."

HAIR BY DOUGLAS DAVID, DOUGLAS CARROLL SALON, RALEIGH, NC. MAKEUP BY BETTY MEKONNEN, PHOTO BY TOM CARSON, PRODUCTION: GLOBAL HAIR & FASHION GROUP



so sultry

## HOLLYWOOD HEAT

Red-hot copper color and ultra-glam curls make for a red carpet-worthy look.

**The Technique:** A single color process followed by a glaze.

**Penna Says:** "It's for someone who wants to be classic and fierce at the same time."

HAIR BY MICHAEL BARNES, LONDON, UK, PHOTO BY KYOKO HOMMA, MAKEUP BY MARCO ANTONIO, STYLING: FEM TAKEHOUCHE



study in contrast

## STUDY IN CONTRAST

You get amazing contrast with pale blonde highlights against a warm brunette base.

**The Technique:** After creating the base color, paint on wide blonde panels concentrated in front.

**Penna Says:** "This look is very low-maintenance and would be great for someone who likes to make a statement without too much effort."

HAIR BY WILLIAM ALEXANDER, DOUGLAS CARROLL SALON, RALEIGH, NC. MAKEUP BY BETTY MEKONNEN, PHOTO BY TOM CARSON, PRODUCTION: GLOBAL HAIR & FASHION GROUP



shade  
secrets



the bright stuff

## THE BRIGHT STUFF

A brunette base color with chunky platinum panels gives straight strands a unique look.

*The Technique:* Have wide panels of blonde foiled over the base.

*Penna Says:* "It's definitely bold," but the classic cut brings it down to earth. HAIR BY L'ANZA HEALING HAIRCARE.



strawberry swirl

## OH, HONEY

This sweet shade of honey is accented with highlights for a soft, shiny effect.

*The Technique:* Ask for a full head of highlights and root lift in between them to break up the shade.

*Penna Says:* "It's natural-looking and very pretty, but you have to keep up with this color."

HAIR BY GEORGE DAVIS, GEORGE DAVIS SALON, AUSTRALIA. MAKEUP BY ISABELLA. PHOTO BY SAM BORICH.



oh, honey

## WARMING TREND

Sleek brunette locks are revved up with a touch of red.

*The Technique:* You'll need a single process color with highlights to break up the base.

*Penna Says:* "This is a nice look that can spotlight certain skin tones and eyebrows. It's also very sexy."

HAIR BY STEFAN HERTZ, HERTZ HAIR DESIGN, OTTWEILER, GERMANY. MAKEUP BY BETTY MERONEN. PHOTO BY TOM CARSON. PRODUCTION: GLOBAL HAIR & FASHION GROUP.



ginger spice

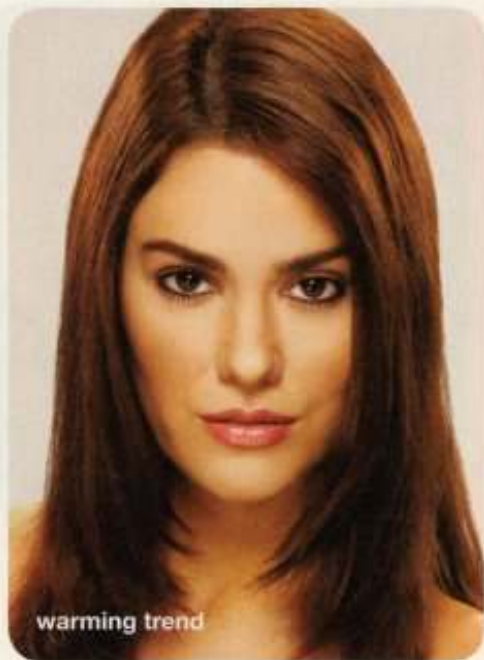
## GINGER SPICE

Dark copper red color has twice the spice when hair is styled for sultry texture.

*The Technique:* After achieving the single-process red, have your colorist add a glaze to maintain the glossy finish and target the tone.

*Penna Says:* Red can be hard to maintain—it fades much more easily than other hues. "I recommend investing in a good shampoo that's tailored to color-treated hair."

HAIR BY GEORGE DAVIS, GEORGE DAVIS SALON, AUSTRALIA. MAKEUP BY ISABELLA. PHOTO BY SAM BORICH.



warming trend



## STRAWBERRY SWIRL

Blah blonde locks are spiced up with a touch of ginger.

*The Technique:* This color requires a single process treatment with frequent maintenance.

*Penna Says:* "While this shade of strawberry-blond is soft and elegant, natural brunettes should steer clear; it'd be very difficult to achieve."

HAIR BY XENA PARSONS, XENA'S BEAUTY COMPANY, NEW YORK, NY. MAKEUP BY BETTY MEKONNEN. PHOTO BY TOM CARSON. PRODUCTION: GLOBAL HAIR & FASHION GROUP.



paint it black

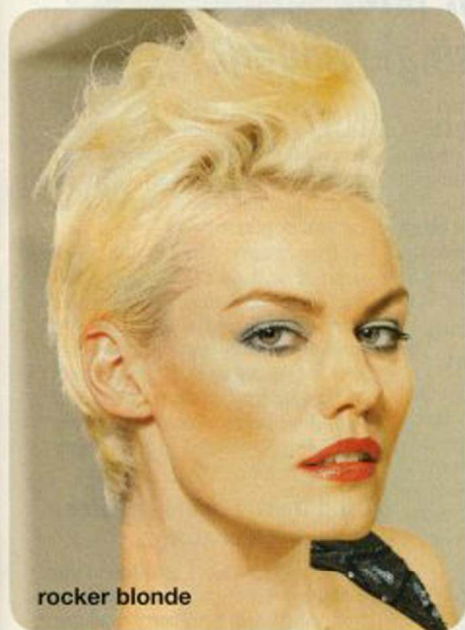
## PAINT IT BLACK

This edgy bob boasts deep brunette at the sides, with an eye-obscuring panel of ink-black in front.

*The Technique:* Plan on double process color to get a hue this dark.

*Penna Says:* "While this look is daring and very noticeable, it's easy to maintain."

HAIR BY MG MARTIN GOLD ARTISTIC TEAM, UK. MAKEUP BY CHARLOTTE FOSTER-BROWN. STYLING: FLEUR EGAN. PHOTO BY MARK BOND.



rocker blonde

## ROCKER BLONDE

Edgy, yellow-blonde will give your crop a rocker vibe.

*The Technique:* You'll need a double-process base color with a bit of the roots taken darker for a more natural look.

*Penna Says:* "Roots may show in about two weeks, so be prepared for frequent touch-ups."

HAIR BY DARLENE MARTINEZ, XENA'S BEAUTY COMPANY, NEW YORK, NY. MAKEUP BY BETTY MEKONNEN. PHOTO BY TOM CARSON. PRODUCTION: GLOBAL HAIR & FASHION GROUP.



strike it rich

## RED ALERT

Warm strawberry sweetens up a head full of beach-y curls.

*The Technique:* This color can be achieved with baliaige, focusing on the mid-shaft to the ends to create dimension and make some areas lighter than others.

*Penna Says:* "This is a pretty, soft shade that's youthful and fun."

HAIR BY PAUL FALLTRICK EDUCATIONAL TEAM, PAUL FALLTRICK HAIRCRESSING, UK. MAKEUP BY BETTY MEKONNEN. PHOTO BY TOM CARSON. PRODUCTION: GLOBAL HAIR & FASHION GROUP.



red alert

## STRIKE IT RICH

Deep chestnut looks best against pale, creamy complexions—the skin tone natural redheads tend to have.

*The Technique:* A dark-toned, single process color and gloss.

*Penna Says:* "It's sexy, confident and defined. The blunt bangs and color make this look very trendy."

HAIR BY TERRI KAY, MARK LEESON HAIR, BODY AND MIND, MANSFIELD, UK. MAKEUP BY KYLIE O'TOOLE. CLOTHING STYLIST: BERNARD CONVOLLY. PHOTO BY ANDREW O'TOOLE. PRODUCTS: GOLDWELL.